



# MARKIT

## Smart Grading

 [www.ipmcap.com](http://www.ipmcap.com)

 [info@ipmcap.com](mailto:info@ipmcap.com)

 +44 77330 03930

## WHAT DOES **MARKIT** OFFER ?

The program is designed to check and grade MCQ type exams. It works like an OMR machine that is standardly used along with bubble sheets where students fill in the correct answers on the answer sheet and the sheet is fed through the OMR machine.



## PRODUCT FEATURES



Streamlined  
Assessment



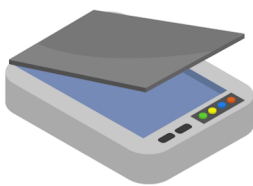
Secure  
Experience



AI-Powered  
Marking  
Assistance

## WHY CHOOSE **MARKIT** ?

The value our program provides over usual method is:



Doesn't require an OMR machine



No need of bubble sheet for answers



Easy scanning of exam paper

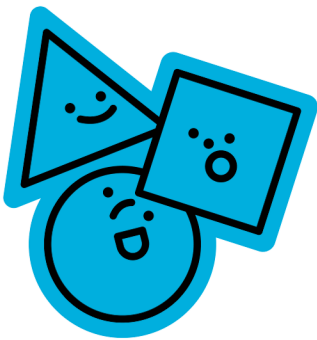


Uploading on Markit server for checking and grading



## ***EFFICIENCY***

Automated grading systems significantly reduce the time and effort required to evaluate exams, enabling teachers and professors to focus on other critical aspects of education



## ***CONSISTENCY***

Automated grading systems follow a predefined set of rules and standards consistently, ensuring fair and objective evaluations for all students



## ***SPEED***

With AI-powered grading systems, exams can be evaluated and results generated in a fraction of the time it would take manually



## THE AI IN MARKIT

The AI in the MarkIt program backend only deals with the detection of the answer markings, whether the student has marked as answer using a tick, a circle or a fill. The program detects the marking the student had made and determines the answer he selected for the question consequentially.

10. The following program will receive data from port 1, determine whether bit 2 is high, and then send the number FFH to port 3:

```
READ: MOV A,P1
ANL A,#2H
CJNE A,#02H,READ
MOV P3,#FFH
```

A. True  B. False

11. Device pins XTAL1 and XTAL2 for the 8051 are used for connections to an external oscillator or crystal.

A. True  B. False

12. When the 8051 is reset and the  $\overline{EA}$  line is HIGH, the program counter points to the first program instruction in the:

A. internal code memory  C. internal data memory  
 B. external code memory  D. external data memory

13. An alternate function of port pin P3.4 in the 8051 is:

A. timer 0  C. interrupt 0  
 B. timer 1  D. interrupt 1

14. The I/O ports that are used as address and data for external memory are:

A. ports 1 and 2  C. ports 0 and 2  
 B. ports 1 and 3  D. ports 0 and 3

15. The last 96 locations in the internal data memory are reserved for general-purpose data storage and stack.

A. True  B. False

16. Microcontrollers often have:

A. CPUs  C. ROM  
 B. RAM  D. all of the above

AI detects marked answer & shape

Self Grading

2/4

The AI model detects the options the student selected and the program then accordingly determines the selected answers. This information is then used to grade the paper by comparing the answers with a user defined answer key

## HOW MARKIT IS BETTER?

Can detect marked answer



Can detect modes of marked answer (tick, fill, circle)



Determines the answer



Self Grading



Answer Comparison



**74%**

www.markit.com

### Statistics

Users <b>1</b>	Exams <b>5</b>	Subjects <b>4</b>
-------------------	-------------------	----------------------

### LATEST EXAM

- Full Mid Term Exam
- Test Exam
- ABC Exam
- Mid Term
- Final Term

## Reports

### SUBJECTS

Title	Section	uploaded file	result clear	Error	Action
Computer 1	PART-A	/uploads/7-12-12.zip	<a href="#">Clear</a>		<a href="#">👁</a>

### Markit

#### 04 - Test Exam

Subject : Computer 1

	Reg no	Total Marks
1	17PWELE5119	35/ 60
2	18PWELE5311	30/ 60
3	20PWELE5685	23/ 60

**iM**  
**Capital**

 [www.ipmcap.com](http://www.ipmcap.com)

 [info@ipmcap.com](mailto:info@ipmcap.com)

 +44 77330 03930